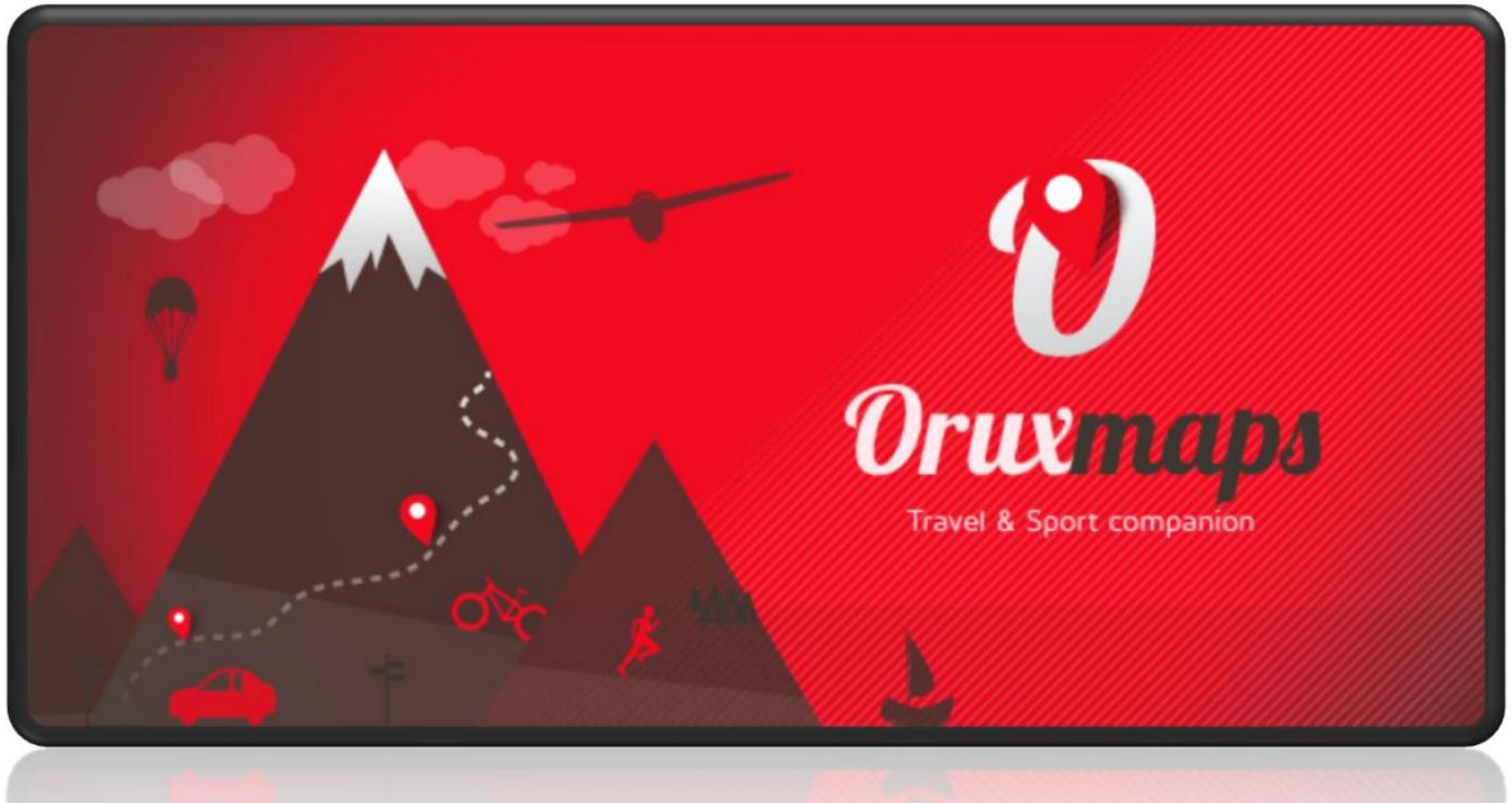


Kasutaja koolitus.



Teemad:

- Võistlusformaadid
- Vajalikud abivahendid võistluseks
- Oruxmap tutvustus
- Kaartide ettevalmistamine
- Orienteerumispunkide ettevalmistamine
- Praktilisi näpunäiteid

Võistlusformaadid.

- Punktid vabavalikul
- Punktid ette antud järjekorras
- Joonorienteerumine
- Kiiruslikud lisakatsed (sprint)

Lisaks: kontrollpunktide raskusastmed, etappide raskuskoefitsendid, karistused

PS. Kontrollaeg!!! Pildistamine!!!

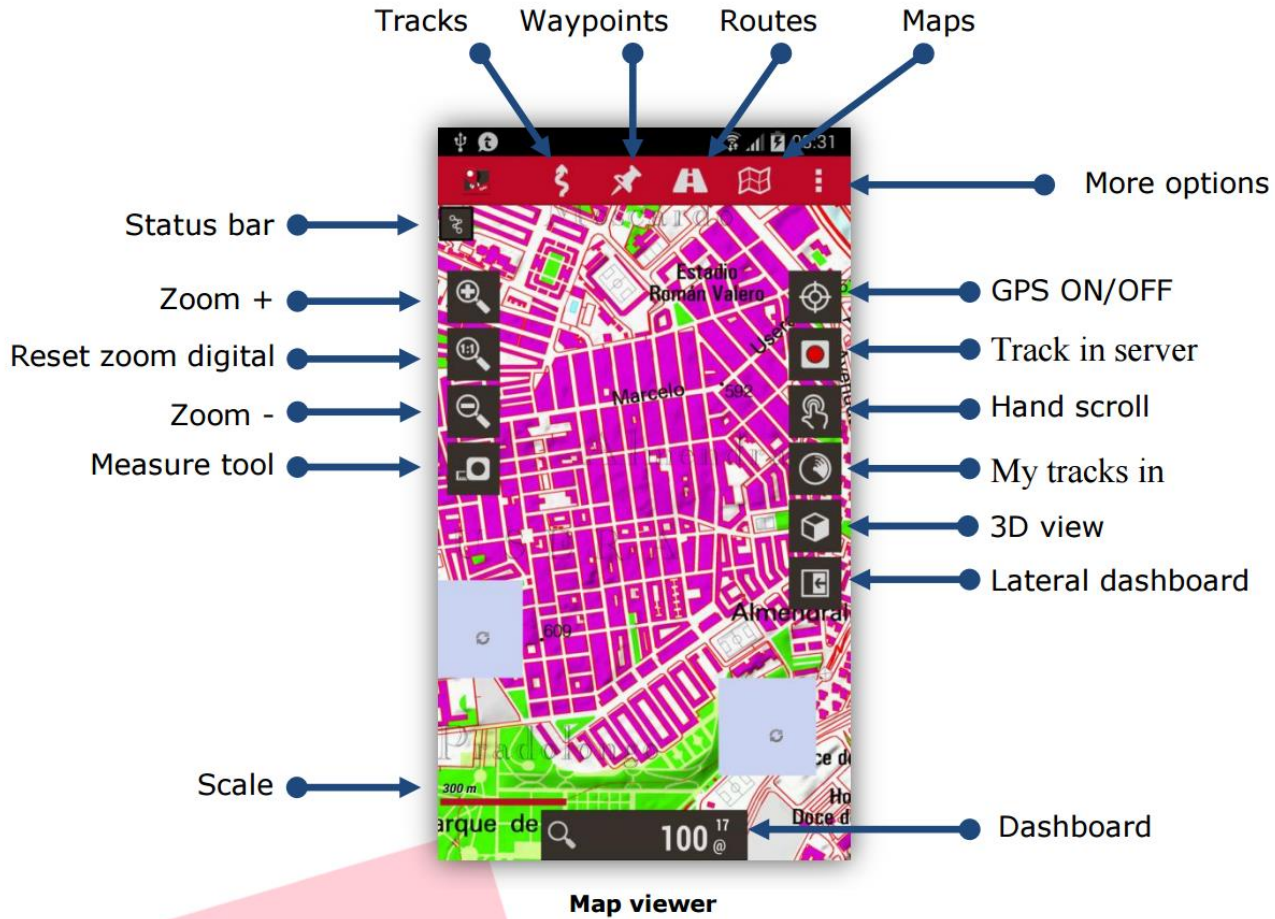
Oluline alustamiseks.

- Android opsüsteem (+mobiilne internet)
- Oruxmaps tasuline versioon (1.99 eur)
- File Commander Premium (3.65 eur)
- USB mälupuk (USB+miniUSB)
- Navigeerimise app (**GoogleMaps, NaviCup..**)
- Joonorienteerumiseks app **Ralli Tripmeeter**
- **Autos** paar USB pesa

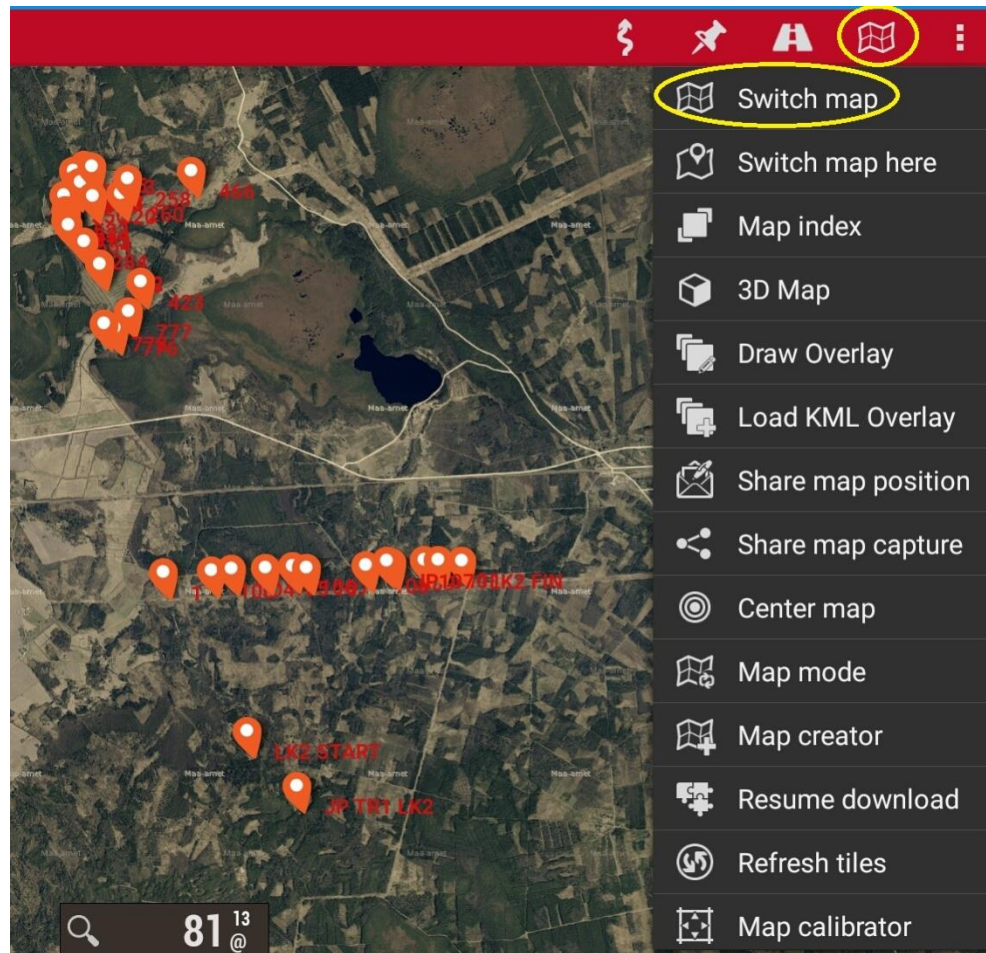
Lisavarustus

- Fotoaparaat(niiskus/veekindel,põrutusk.)
- Motokiiver (side soovituslikult)
- Puukaitsevöö (90mm)
- Puksiirköis 5m, 5T tõmbejõud
- Tulekustutid 2x2 kg
- Esmaabipakend
- Autol nähtavad pukseerimise aasad min.30mm (kollane,punane või oranz)
- Blokid ,seeklid,konksud jne.

Töölau

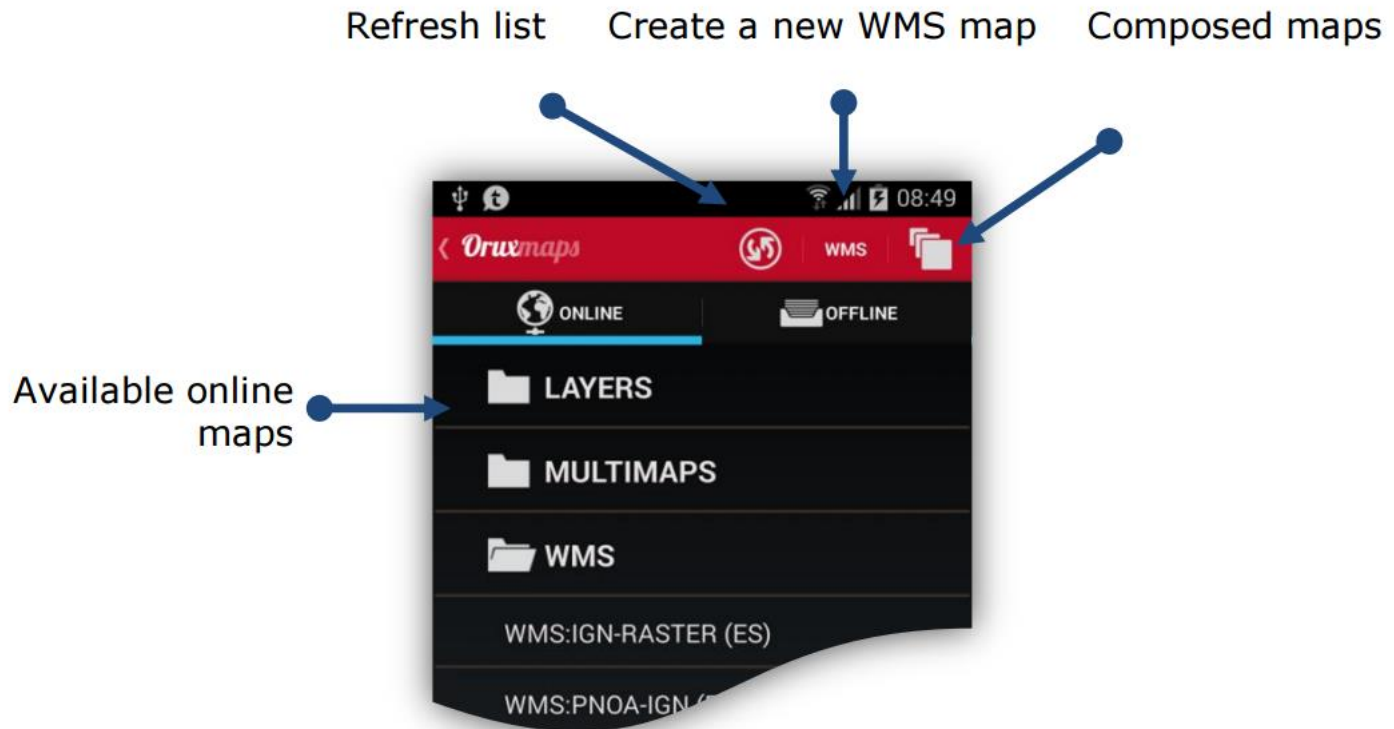


Toimingud kaartidega.

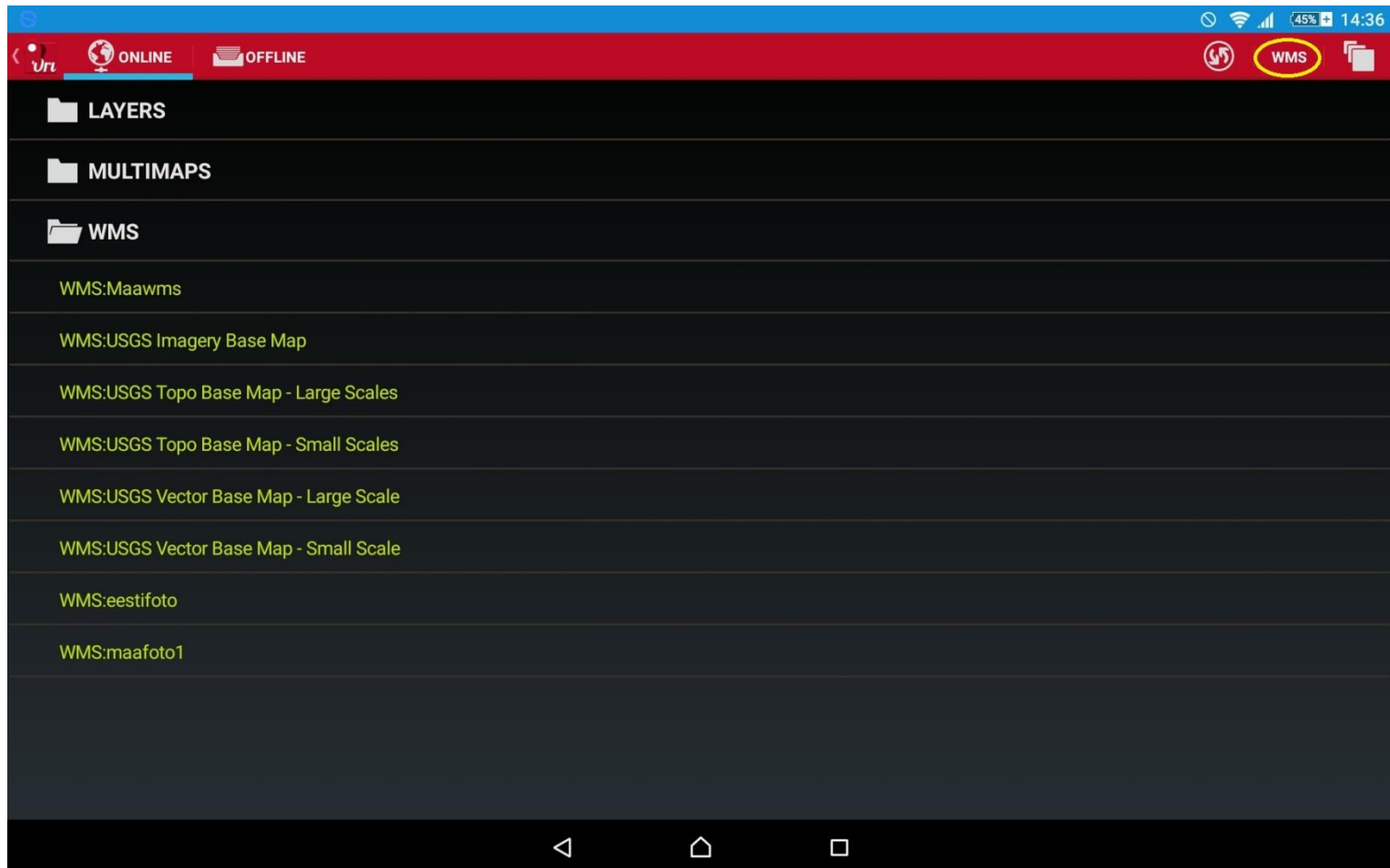


Online/Offline kaardid

Online Maps



Online WMS koostamine



WMS koostamine.

- <http://kaart.maaamet.ee/wms/alus-geo?>
- Aluskaardi ja info valik
- Suurendus astmed (soovitan 10-20 max)
- Märkida tasuks ka märkeruudud „Cacheable“ ja „Downloadable“. (saab kasutada kaarti programmis ka siis kui internetiühendust ei ole, ehk kaart võetakse Teie seadme mälust).
- WMS määrata tuntav nimi
- Vajuta nupule „Create“.

WPT salvestamine.

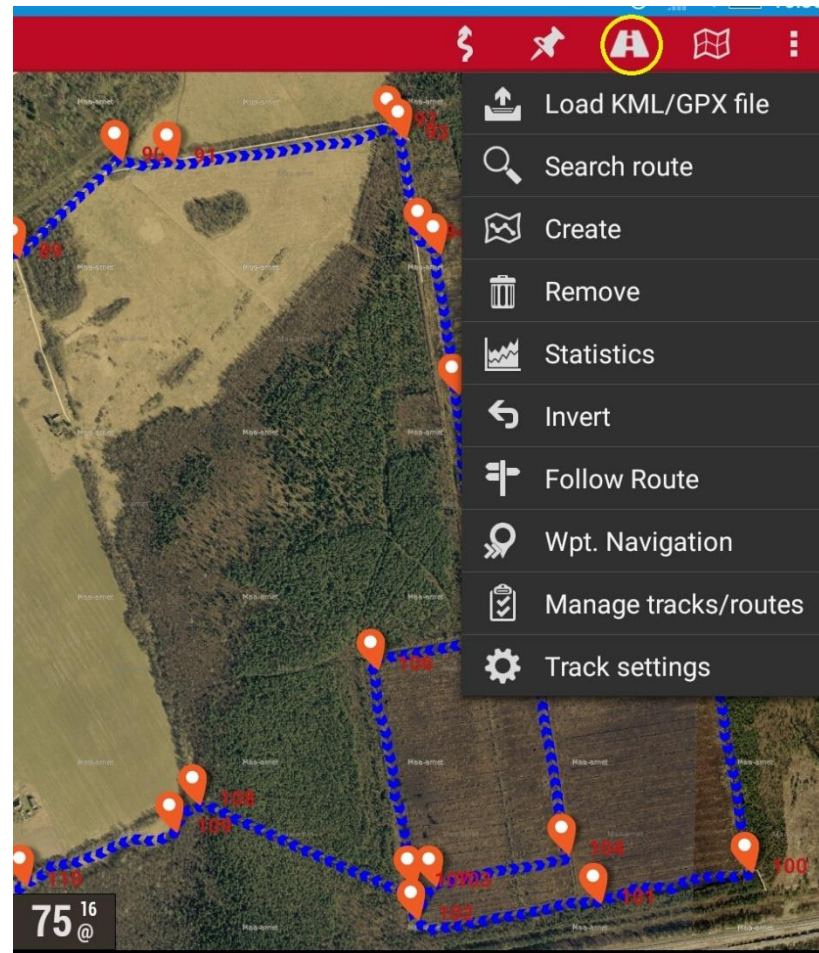
Sisemälu > oruxmaps > tracklogs

Logi sisse

- Avaleht
- Viimatised failid
- Turvarežiim
- Lemmikud
- Prügikast
- Sisemälu
- SD-kaart
- FTP
- Kohalik võrk
- Lisa konto
- Kaugühiskettad

Laup2ev_TR1 - Kopeerimine.gpx	15.10.2015 5:29.48 AM	12,2 KB
oruxmapstracks.db	18.01.2016 6:23.16 PM	52,0 KB
oruxmapstracks.db-journal	18.01.2016 6:23.16 PM	16,5 KB
oruxmapstracks.db.backup	31.01.2016 8:26.48 AM	56,0 KB
oruxmapstracks.db.backup-journal	18.01.2016 6:23.15 PM	4,5 KB
oruxmapstracks.db.backup2	10.02.2016 2:26.25 PM	56,0 KB
oruxmapstracks.db.backup2-journal	18.01.2016 6:23.16 PM	4,5 KB
Proov.gpx	13.10.2015 3:30.44 PM	927 B
tr1.gpx	20.11.2015 10:23.19 PM	559,8 KB

WPT avamine. (.GPX fail)



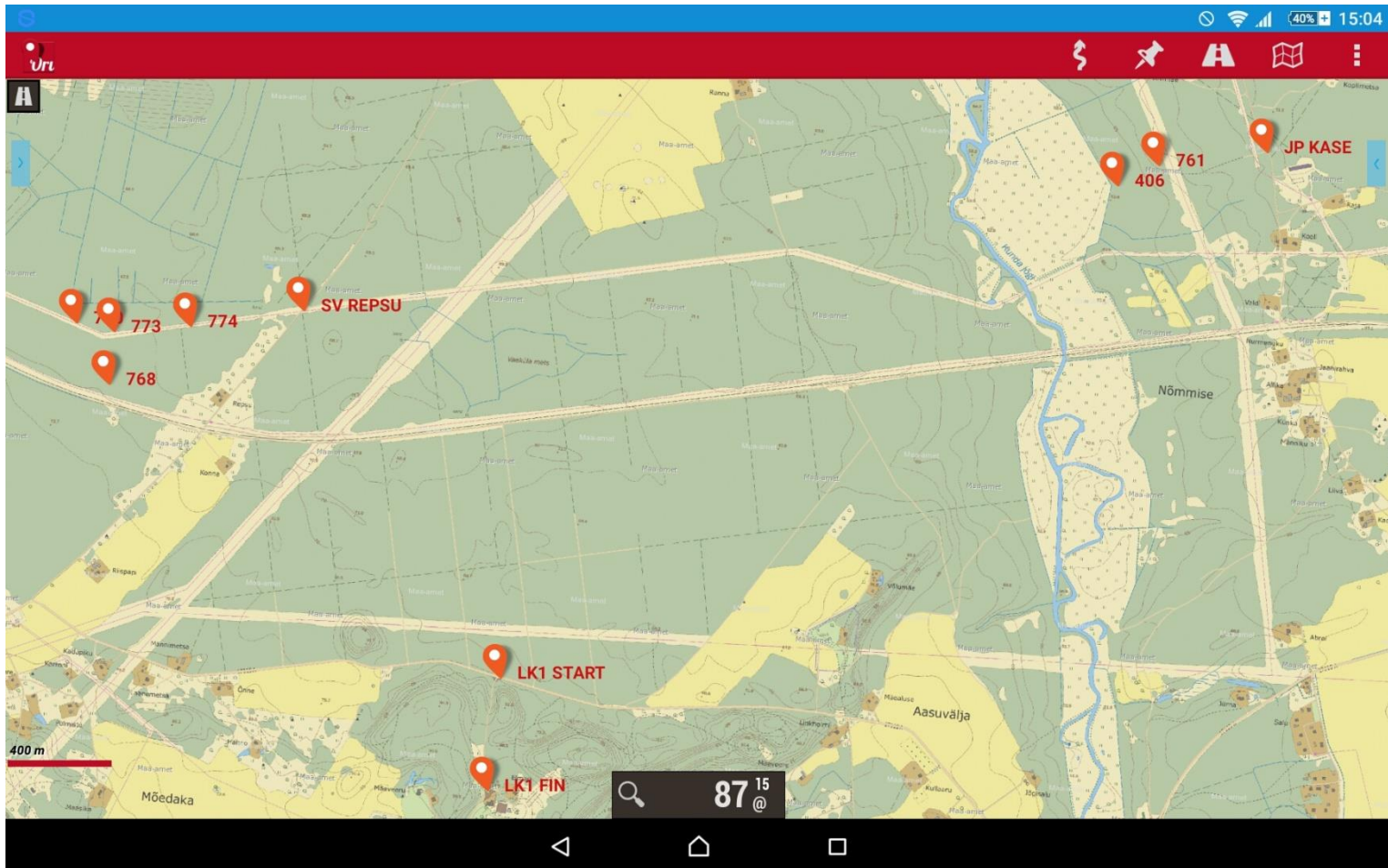
WPT haldus

The screenshot displays the Oruxmaps application interface for managing waypoints. The list includes columns for ID, date, type, and distance. Annotations point to various UI elements and their functions:

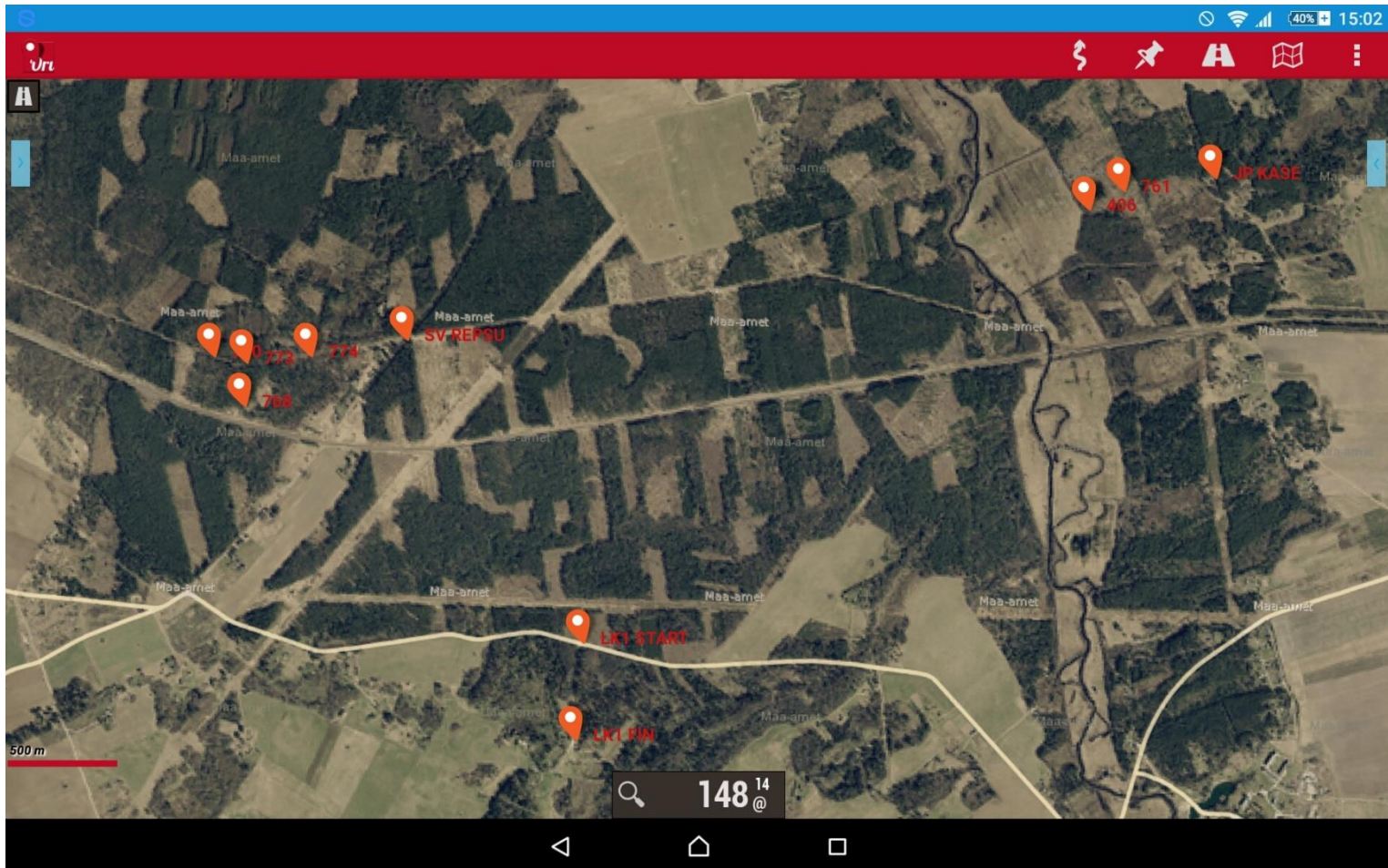
- Select all**: Points to the top-left menu option.
- Remove selection**: Points to the top-middle menu option.
- Invert selection**: Points to the top-right menu option.
- Create new folder**: Points to the folder icon in the top right of the list.
- Select folder**: Points to the folder icon in the top right of the list.
- Drag & drop**: Points to the vertical handle icon on the left of a list item.
- Select**: Points to the checkmark icon on the left of a list item.
- Icon Type Distance to wpt**: Points to the colored icon, type name, and distance on the right of a list item.
- Delete**: Points to the trash icon in the bottom toolbar.
- Export as...**: Points to the document icon in the bottom toolbar.
- Load as a route**: Points to the map icon in the bottom toolbar.
- Load into active route**: Points to the map icon in the bottom toolbar.
- Sort**: Points to the double-headed arrow icon in the bottom toolbar.
- Search**: Points to the magnifying glass icon in the bottom toolbar.
- Filter**: Points to the funnel icon in the bottom toolbar.
- More options:**: Points to the three-dot menu icon in the bottom toolbar.
 - Import
 - Update altitude
 - Mass modification
 - Wpt. type manager

ID	Date	Type	Distance to wpt
0000040	2014-09-20 17:02	Final	42,45 km
0000039	2014-09-20 16:57	Comienzo	42,45 km
0000038	2014-09-17 16:30	Final	37,72 km
0000037	2014-09-17 16:28	Comienzo	37,68 km
0000036	2014-09-17 08:47	Final	6,83 km
0000035	2014-09-17 08:46	Comienzo	6,83 km
0000034	2014-09-16 15:53	Waypoint	177,2 km

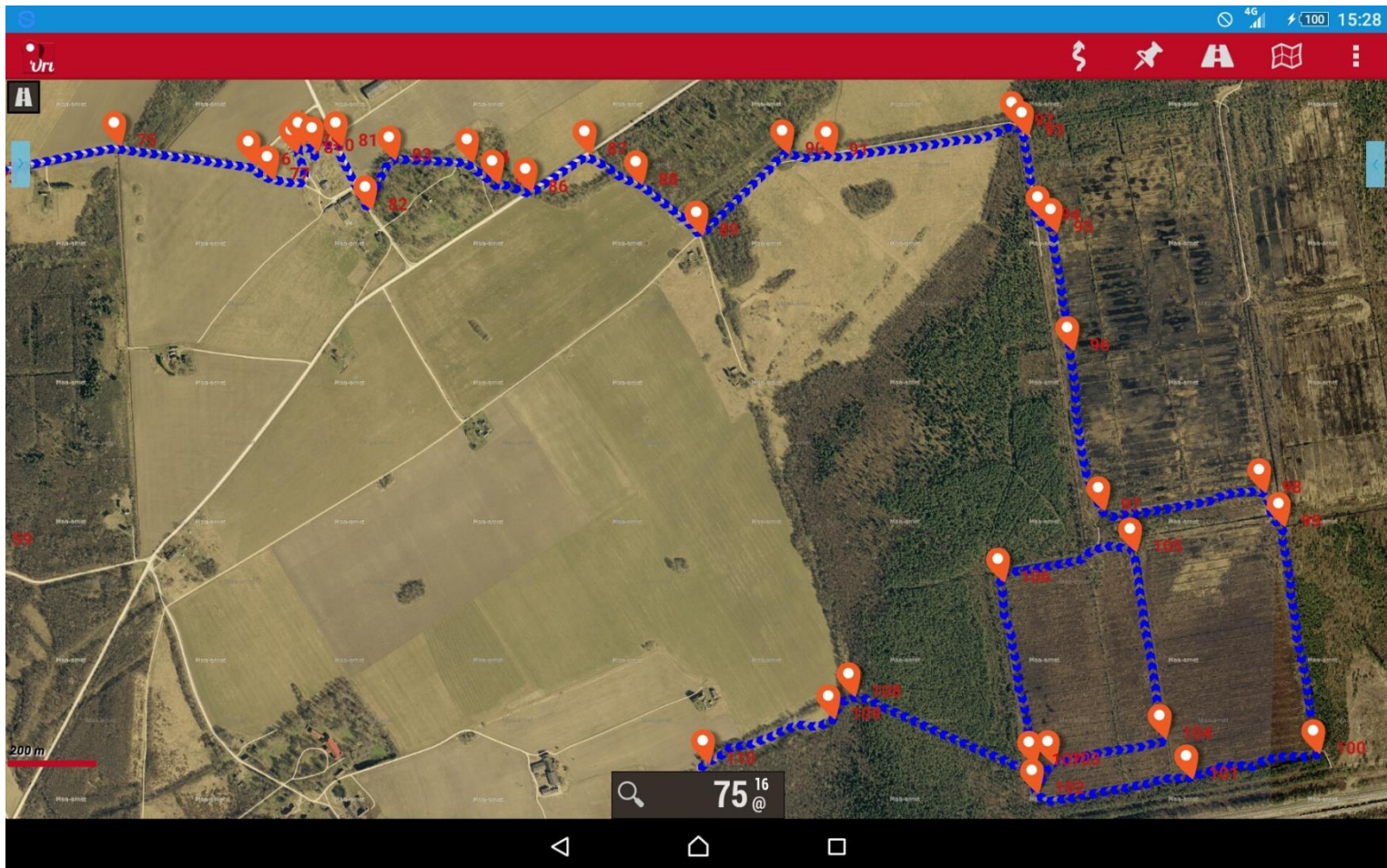
Online kaart(põhikaart)



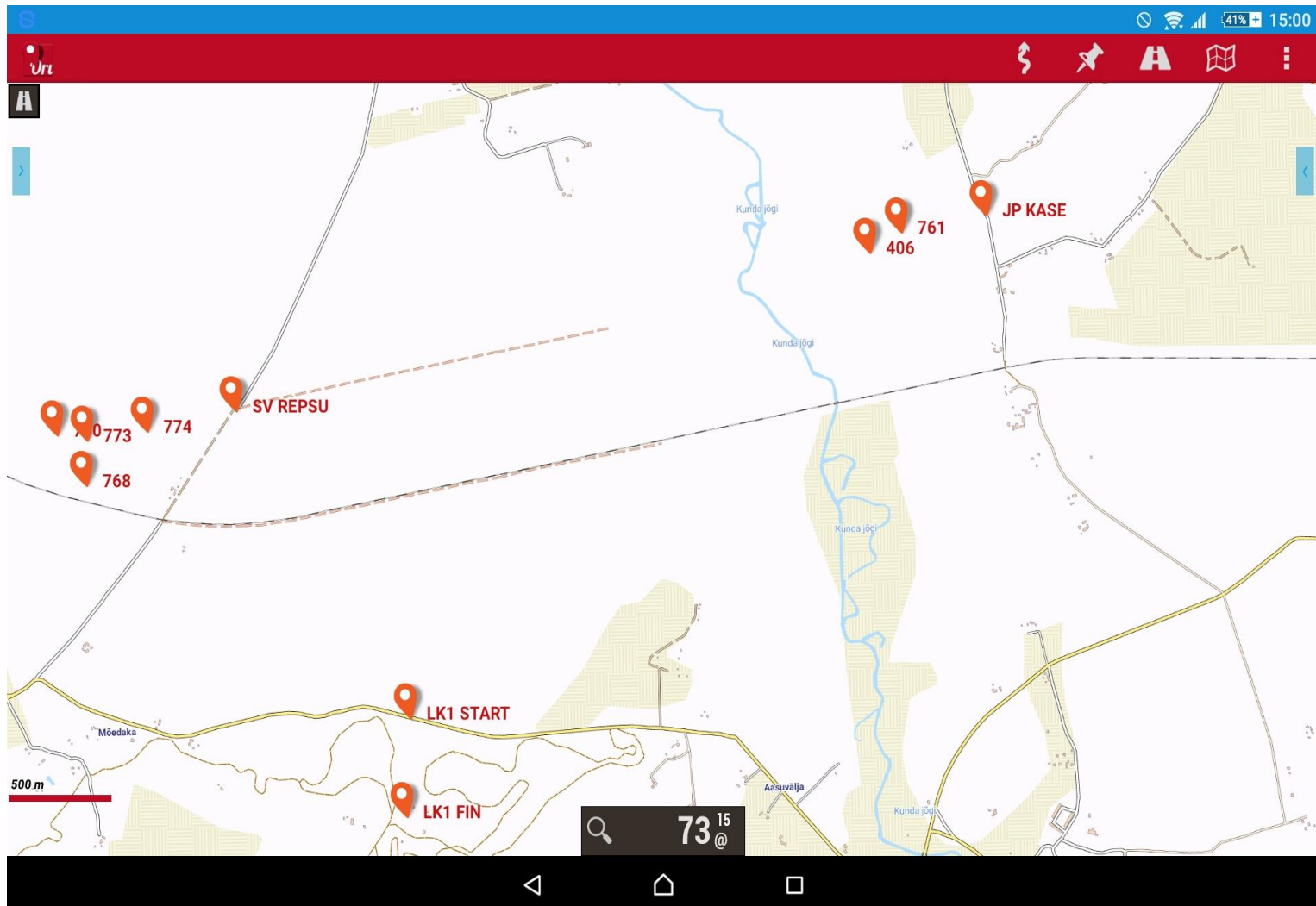
Online kaart (ortofoto)



Etteantud rada.



Offline kaart.



Olulised viited:

http://www.oruxmaps.com/oruxmap_smanual_en.pdf

<http://geoportaal.maaamet.ee/est/Teenused/Avalik-WMS-teenus/WMS-nutiseadmes/WMS-Androidis/Orux-Maps-p432.html>

<http://kaart.maaamet.ee/wms/alus-geo?>
ENNE VÕISTLUST CACHE RESET